

PORTFOLIO

KYOUNGMI LEE



Solo Exhibition (selected, after 2014)

2022	NanaAstro-Travel to Goyang:Planet, Goyang Children's museum, Goyang, Korea
	Can You Hear Me? NanaAstro, Studio KKI, Paju, Korea
	ABC (Art, Black Tiger, Cosmos), Korea Astronomy and Space Science Institute & CNCITY Foundation & DaeJeon journal, DaeJeon, Korea
	Old way x New era, Noblesse Collection, Seoul, Korea
2021	You will never work alone, ARTAGE, Taiwan
2020	One Day At A Time, Liang Project, Shanghai, China
	You will never work alone, Art ChoSun's Atlier project, open studio in artist's studio, Yong In, Korea
2019	THEN & NOW; New Vertical Painting- Durer's Apocalypse, Gallery Sejul, Seoul, Korea
	I GOT LIFE, Lingang Contemporary Art Museum, Shanghai, China
2018	Farewell My Love-Waning Splendor, Liang Project Co Space, Shanghai. China
2015	Utopia as a Distant view, ToSee Gallery, Taipei, Taiwan
2014	Artist's House, Seong Buk Museum of Art, Seoul, Korea

Group Exhibition (selected, after 2014)

2022	Contemporary Tokyo, Contemporary Tokyo, Tokyo, Japan
	Art in Faith, Hori Art space, Seoul, Korea
2021	Visits from my window still friends, Artbelt Soje, Daejeon, Korea
	The Review, Art Museum of Chosun & Noblesse Collection, Seoul, Korea
2020	Up Close 01, M contemporary Museum, Seoul, Korea
2019	Viewpoint of Cat, Clayarch Gimhae Museum, Gimhae, Korea
	IMAGE; Fascinating Alchemy, Danwon Museum of Art, AnSan, Korea
2017	With Companions, Sejong Museum of Art, Seoul, Korea
2014	K-P.O.P. Korea Contemporary arts, MOCA Taipei, Taipei, Taiwan
	The Cultural Code, Springs center of Art, Beijing, China

수상경력 (selected)

2019	24th SeokJu Art Awards, Seok Joo Art Foundation, Seoul, Korea
	Lingang International Youth Artist, Lingang Museum of Art, Shanghai, China
2003	JoongAng Fine Art Contest, Seoul, Korea

Collections (selected)

국립현대미술관, 수원지방법원, 경기문화재단, CNCITY 에너지 재단

LEE KYOUNGMI

(b. 1977)

2006 M.F.A., Hong-Ik University, Painting, Seoul, Korea

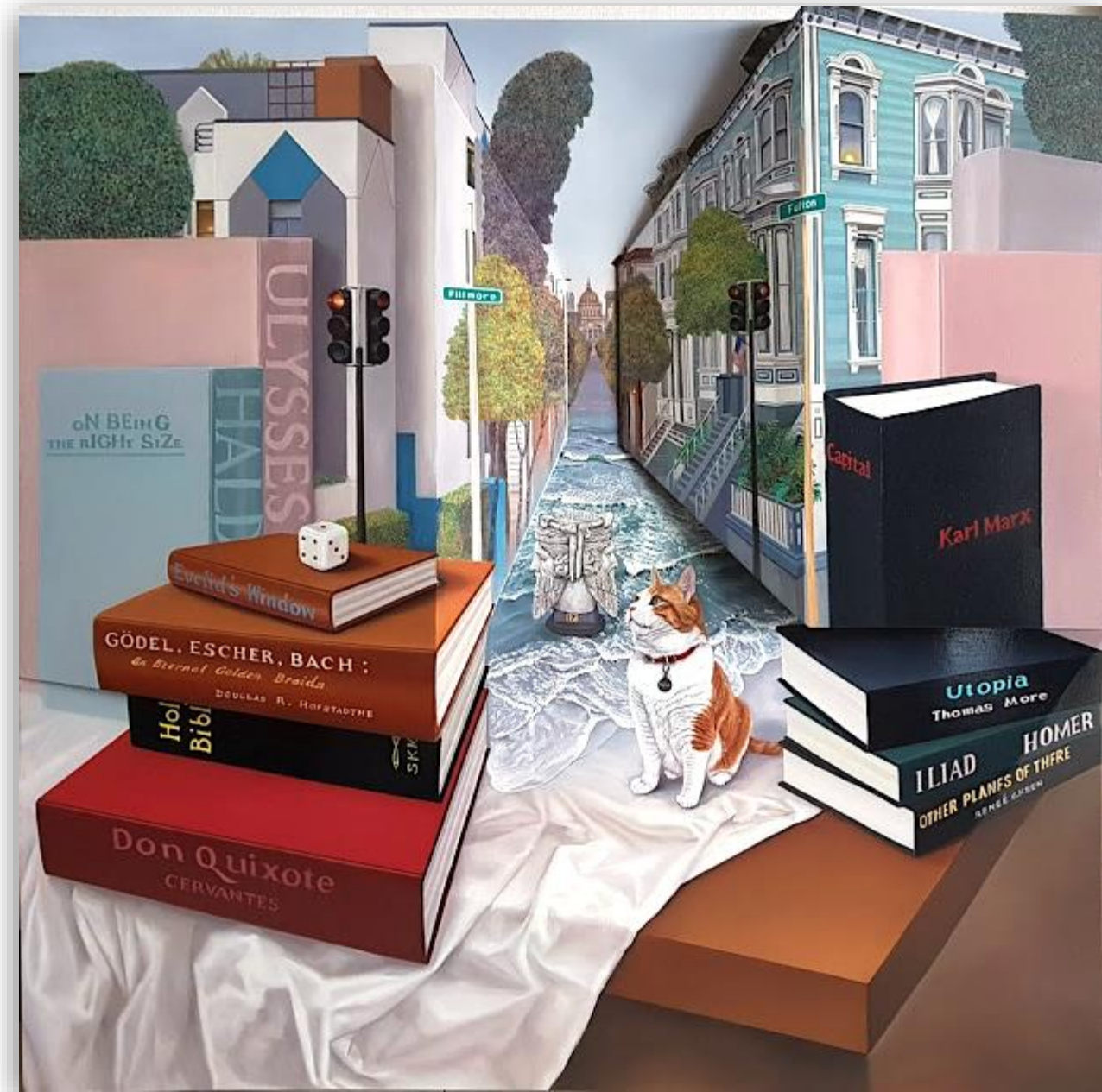
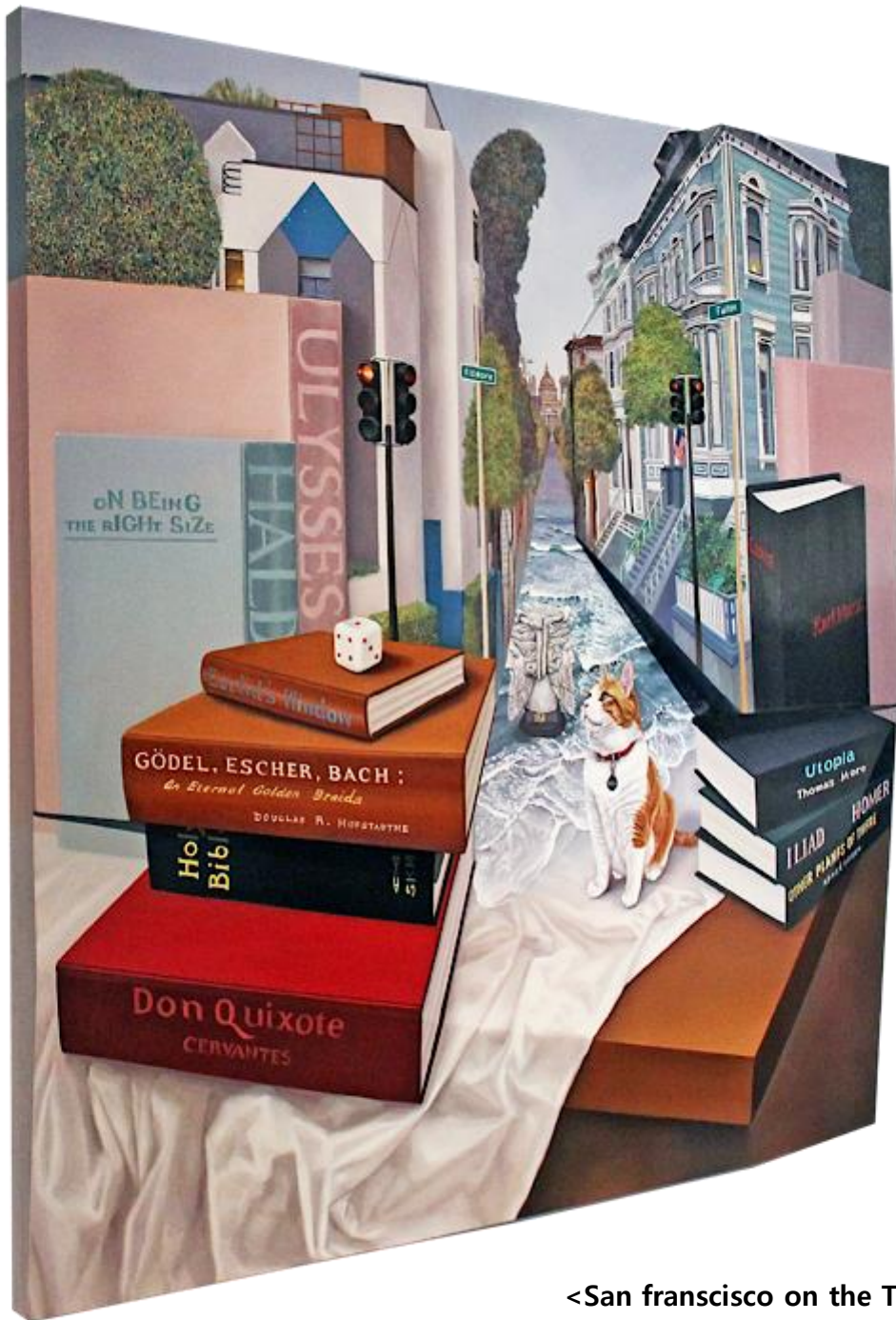
2004 B.F.A., Hong-Ik University, Painting, Seoul, Korea

2000 B.F.A., Hong-Ik University, Printmaking, Seoul, Korea



KyoungMi as Astronaut,
Oil on constructed birchwood, 90x90cm, 2011

PAINTING | Street Series



<San francisco on the Table>, Oil on Constructed Birch Panel, 90x90x10cm, 2017



<Brugge on the table-Moon Phase and Arcadia>,
Oil on Constructed Birch Panel 95x120x11cm_2020



< Brugge on the table-Who knows world lives alone>,
Oil on Constructed Birch Panel 95x120x11cm_2020



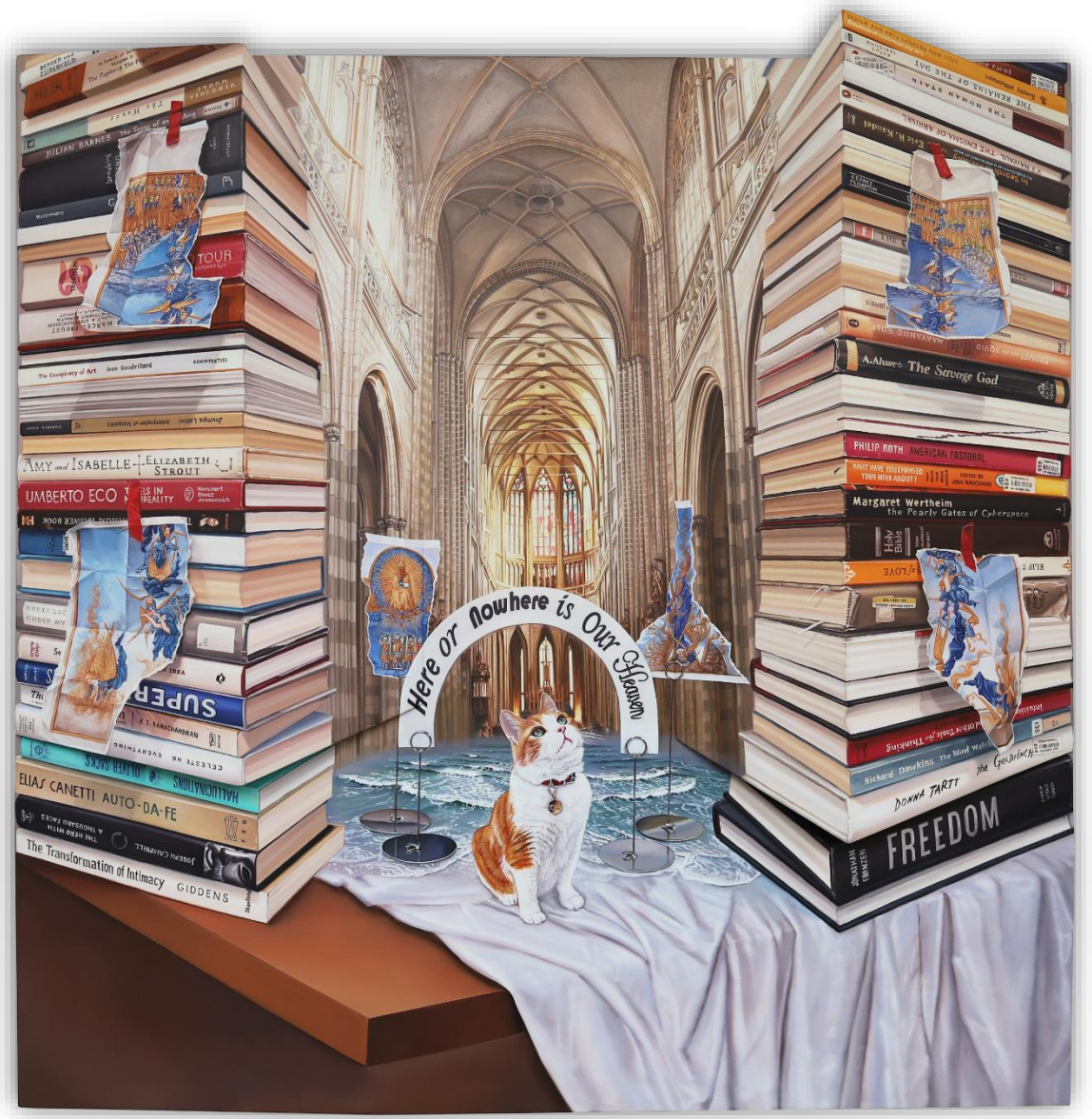
<Hong Kong Dong Shin Church on the Table>
Oil on Constructed Birch Panel, 120x90x10cm, 2019



<MONG KOK GREEN BUILDING on the Table>
Oil on Constructed Birch Panel, 120x90x10cm, 2019



<Brugge on the table-One day at a time>,
Oil on Constructed Birch Panel, 105x108x11cm,2020



<Here or Nowhere is Our Heaven>,
Oil on Constructed Birch Panel, 105x108x11cm,2020



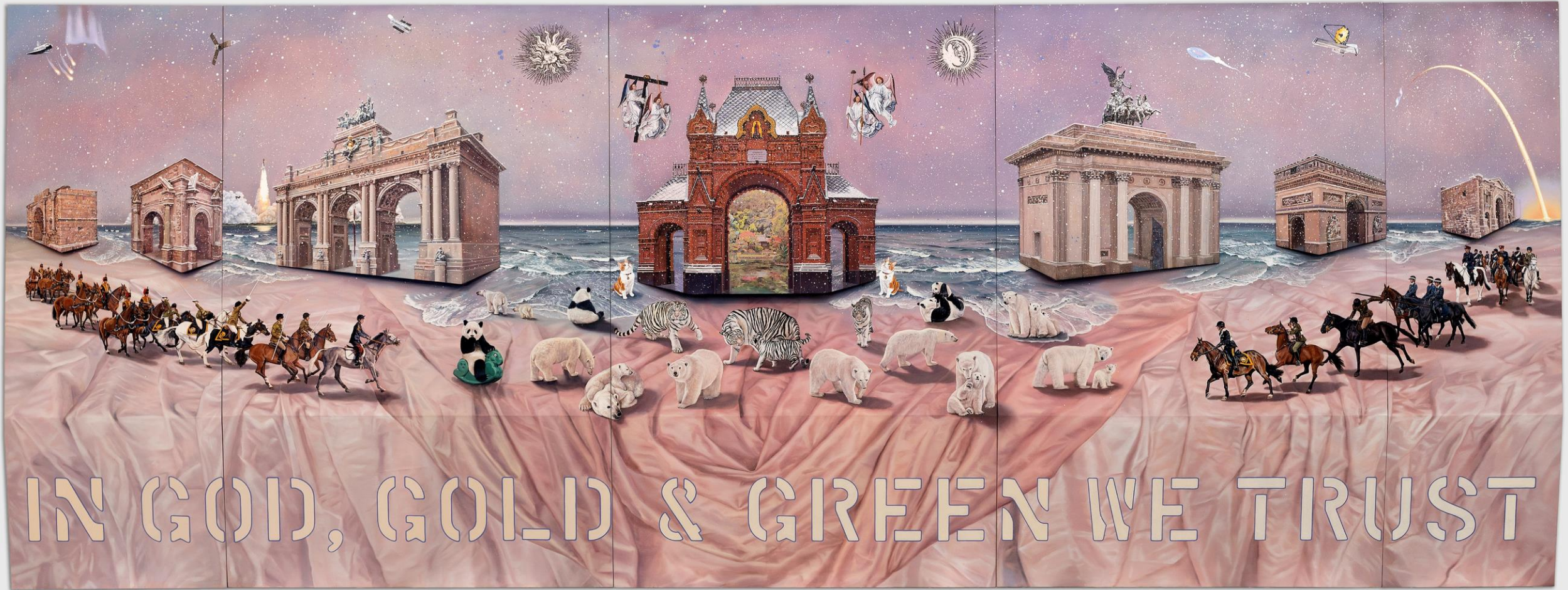
<The Day of Brugge-Apollo>, Oil on Constructed Birch Panel,
130x250x11cm, 2014



<The Night of Brugge-Dionysus>, Oil on Constructed Birch Panel,
130x250x11cm, 2014



<The Day and Night of Brugge-Apollo and Dionysus>, Oil on Constructed Birch Panel, 220x110cm, 2013



<GGG>, Oil on Constructed Birch Panel, 135x360x11cm, 2015-2023



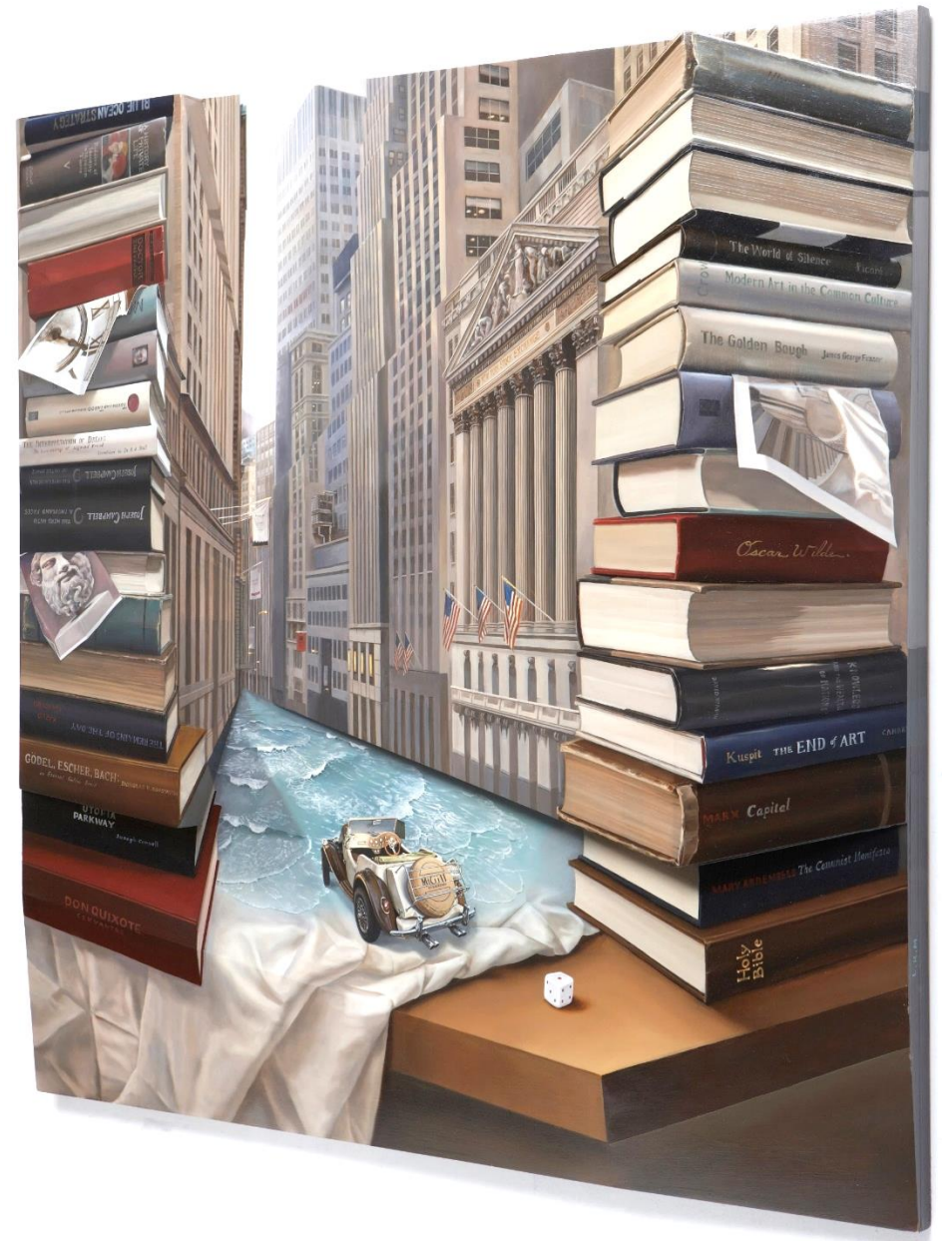
<Snowing in Toledo>,
Oil on Constructed Birch Panel, 90x90x9cm, 2010



<lyodang on the table>,
Oil on Constructed Birch Panel, 90x90x13cm, 2015



<Street on the table>,
Oil on Constructed Birch Panel, 90x90x9cm, 2008



<Wall Street on the table>,
Oil on Constructed Birch Panel, 90x90x9cm, 2011



Liang Project Co Space, Shanghai, China (2018, May-June)



Cais Gallery, Seoul, Korea (2011, Oct)



Cais Gallery, Seoul, Korea (2011, Oct)



Danwon Museum, Ansan, Korea, (2019, July-Sep)

BUILDING Series



<Collections of Void>, Oil on constructed birchwood, 47x79x15cm, 2011

BUILDING Series



ELSEWHERE Series



60x40x8cm



40x60x8cm



60x50x8cm

Nana is elsewhere, oil on constructed birch panel, 2023

PAINTING | Balloon Series



<I Got Life>

Oil on Constructed Birch Panel, 105x105x11cm, 2021



<I Got Life>

Oil on Constructed Birch Panel, 105x105x11cm, 2020





**<You Will Never Walk Alone>,
Oil on Constructed Birch Panel, 104x104x11cm, 2020**



**<Lavish Love>,
Oil on Constructed Birch Panel, 104x104x11cm, 2020**



<Deflated Metropolis 1/3 Party>, Oil on Constructed Birch Panel,
105x105x11cm, 2023



<Deflated Metropolis 3/3 Party>, Oil on Constructed Birch Panel,
105x105x11cm, 2023



<Boom N Crach>, Oil on Constructed Birch Panel,
105x105x11cm, 2018



<Kapow N Pow N Braaa>, Oil on Constructed
Birch Panel, 105x105x11cm, 2018



<Kapow N Pow N Braaa>, Oil on Constructed
Birch Panel, 105x105x11cm, 2018



<Love Me>
Oil on Constructed Birch Panel,
105x105x11cm, 2019



<Love N Arrow-Yellow>
Oil on Constructed Birch Panel,
105x105x11cm, 2019



<Love N Arrow-Pink>
Oil on Constructed Birch Panel,
105x105x11cm, 2019



<I Love You>
Oil on Constructed Birch Panel,
105x105x11cm, 2021

Text on Balloon Painting Works

**“I have no genius,
no mission to fulfill, no great heart
to bestow.
I had nothing and
I deserve nothing.
However, in spite of it, I desire some
sort of recompense”**

*From Inferno,
Date Alighieri*



<The Savage God>, Oil on Canvas & Panel, 265x265cm, 25pcs set of 60x60x7cm, 2011



<Deflated Love-Opaque White> / <Deflated Love-Opaque Black>, 300x300cm, 25pcs set of 55x55x7cm, 2015-2018



<Deflated Love-Lily White>, 300x300cm, 25pcs set of 55x55x7cm, 2015-2018



<Deflated Love-Dot>, 300x300cm, 25pcs set of 55x55x7cm, 2015-2018



Title	Deflated Love - Kiss Me
Material	Oil on Constructed Birch Panel
Size (HxVxD cm)	300x300cm, 25pcs set of 55x55x7cm
Painted in	2015-2020



Spring center of Art, Beijing, China (2014, May-June)





Process of Balloon Works Installation



Liang Project Co Space, Shanghai, China (2018, May-June)

PAINTING | New Vertical Painting & Dürer's Apocalypse

Dürer's Apocalypse Series of 15 works



#7. <The hymn in adoration of the lamb>, Oil on Canvas and Constructed Birch Panel, 156x121x8cm, 2019



#12. <Saint Michael Fighting the Dragon>, Oil on Canvas and Constructed Birch Panel, 156x121x8cm, 2019

#14. <The beast with the lamb's horns and the beast with seven heads>, Oil on Canvas and Constructed Birch Panel, 156x121x8cm, 2019





Crop image,
#3 <St John kneeling before Christ
and the twenty-four elders>



Crop image,
#7 <The hymn in adoration of the lamb>



Crop image, #2 <St John's vision of the seven candlesticks>



Crop image, #7 <The hymn in adoration of the lamb>

Dürer's Apocalypse Series

Awarded 24th SeokJu Prize in 2019

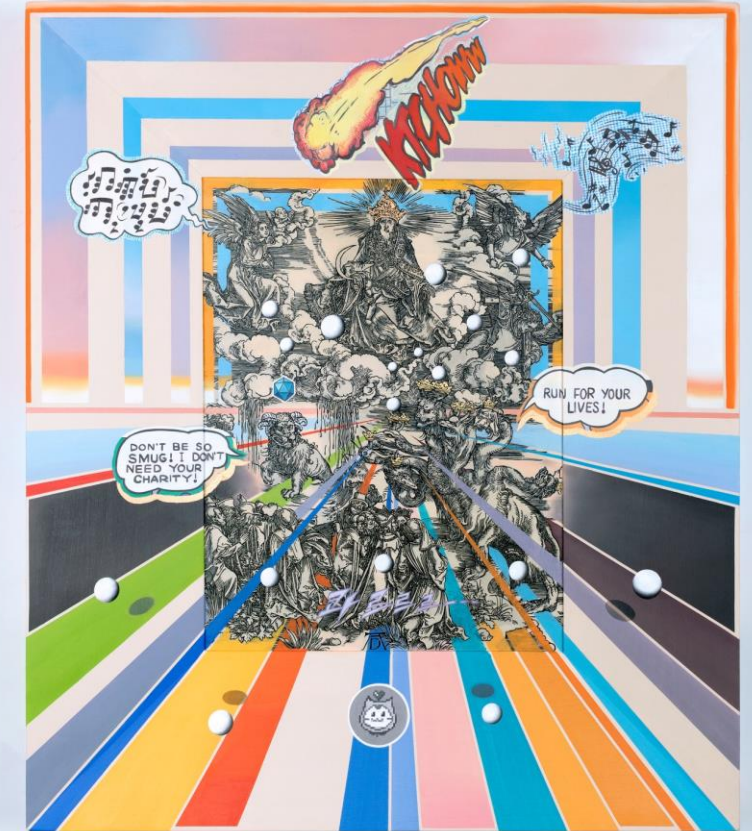


Sejul Gallery, Solo Show, Soeul, Korea, (2019, Oct-2020, March)





2022 - New vertical Painting Durer's Apocalypse



New Vertical Painting Series, 91x79x8cm,
Oil & Acrylic on Canvas & Constructed Birch Panel, 2022



Gloria Ad Nanaastro, 130x130cm,
Oil & Acrylic on canvas, 2022



Rather than truth, than fame, than money, give me love, Ø120cm,
Oil & Acrylic on canvas, 2022



<Gloria ad nanaastro
- Instrvmentvm>



<Gloria ad nanaastro
- Folium populi>



<Gloria ad nanaastro
- Instrument Buch Durch>

130 x 130cm, Oil & Acrylic on canvas, 2023

NANAASTRO



Figure of Nana Family view, 2019



Flying Nana small, H39cm, Edition of 10, 2018



Standing Nana, H39cm, Edition of 10, 2018





NanaAstro Series, Oil & Acrylic on shaped wood panel, 2022



NANA ASTRO, oil on panel, 80x70x4cm, 2020







SILKSCREEN on shaped wood panel

Limited Edition. 77



NanaAstro Standing ver, 29(H)x15(W)cm, Edition of 50, 2019



NanaAstro Sitting ver, 29(H)x15(W)cm, Edition of 50, 2019



**NanaAstro Standing - TinTin version,
29(H)x15(W)cm, Edition of 10, 2022**



**NanaAstro Sitting - TinTin version,
29(H)x15(W)cm, Edition of 10, 2022**





**10,000 EDITION 1/1 PRINT
BUY PRINT, GET NFT FREE**

OBJECT PAINTING | Jar, Furniture, etc



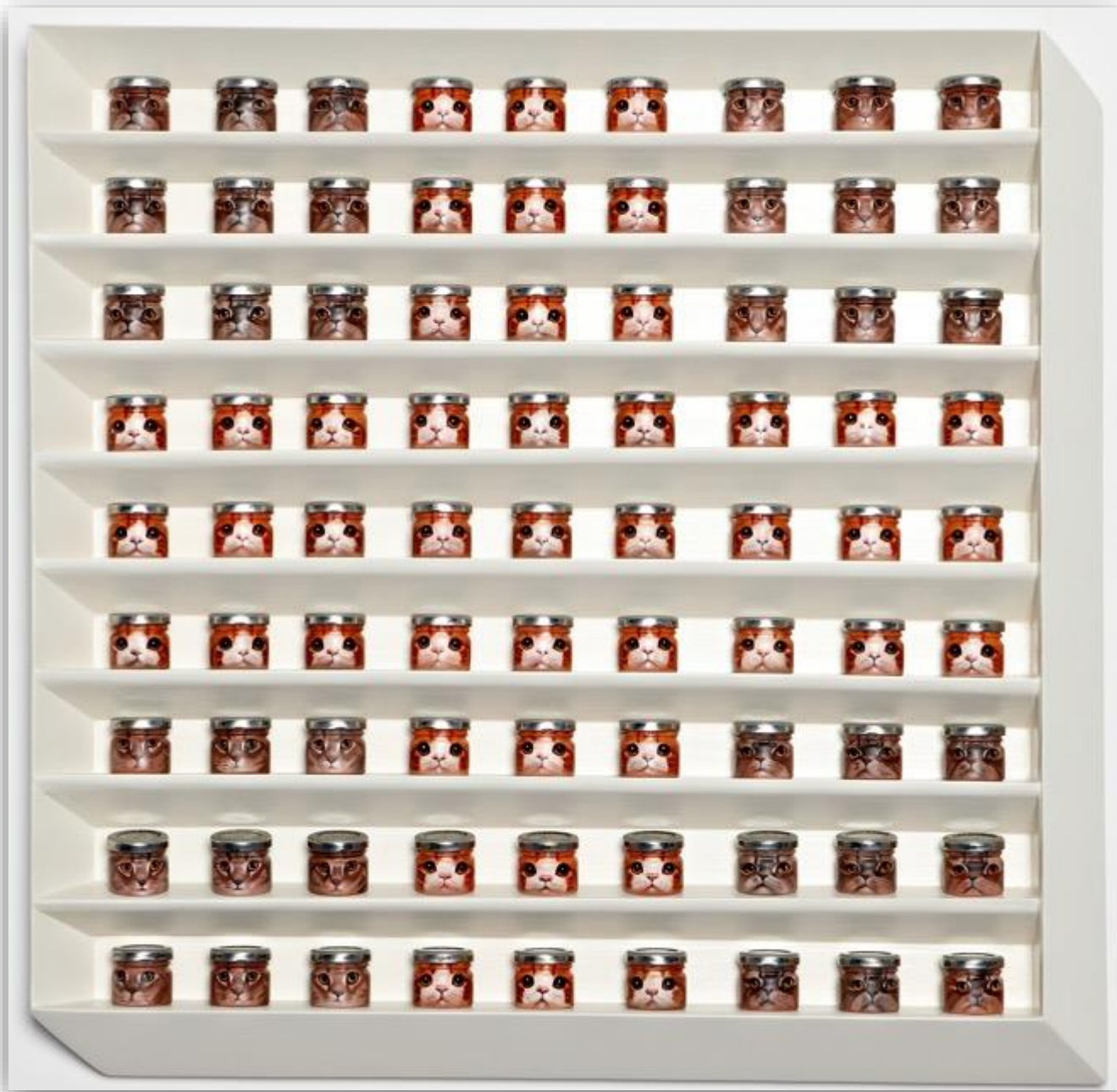
<YOU DONT OWN ME>, Oil on Glass Jars and Installation, 700x185x25cm, 2011



<YDOM Installation>, HongKong, 2012



Tower of Possession, Oil on Glass Jars x Vintage Wall Bracket, 2011-2018



<Desire of 81 Jars>, Oil on Jars, each 4.5x4.5cmx81pcs, 90x90x13cm(frame), 2011



<Nana Cabinet>, Oil on designed cabinet, 45x52x118cm, 2001

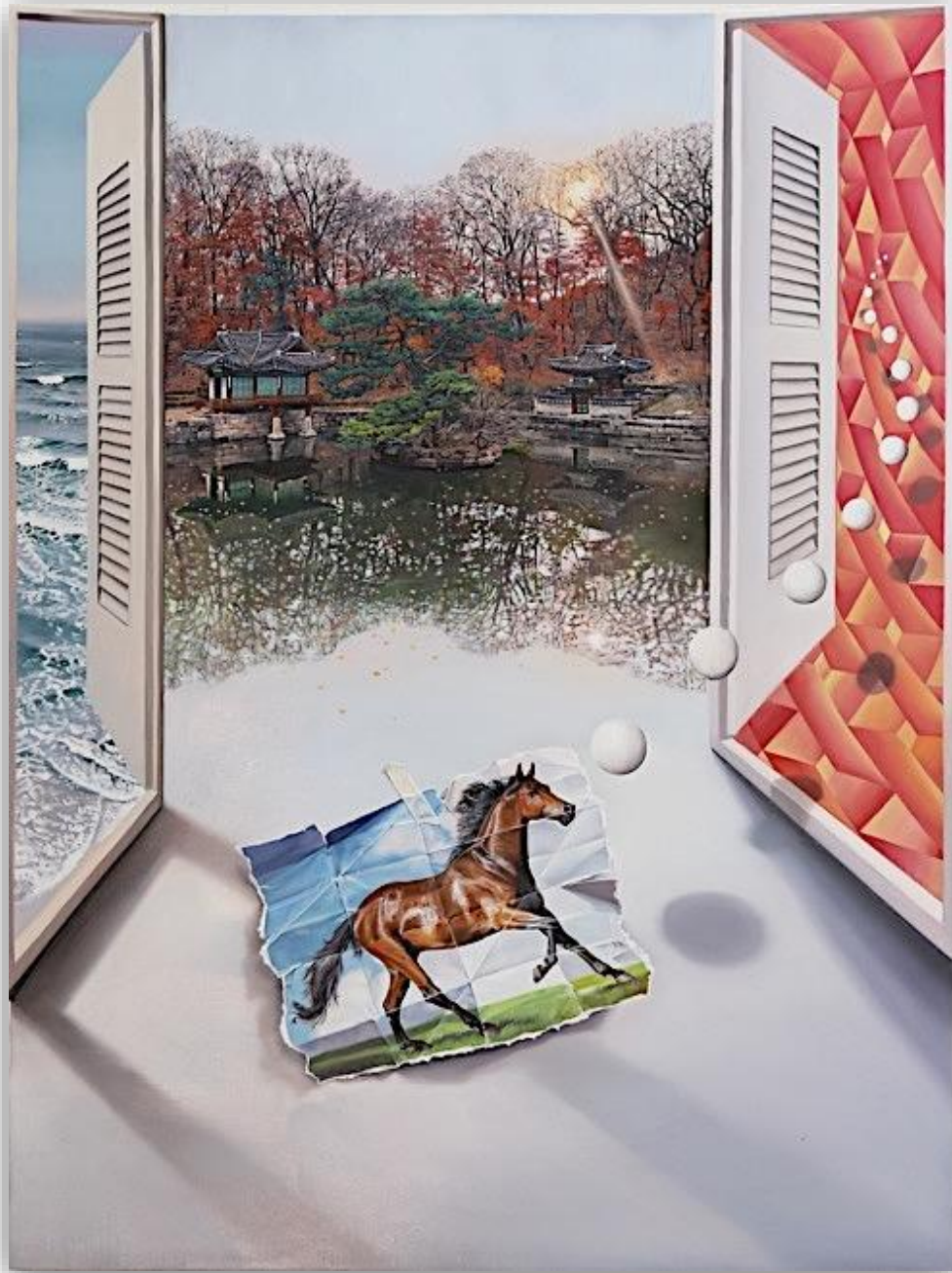


<Nana Partition 2>, Oil on Patrion,



<Nana Partition>, Oil on Patrion, 130x162, 2006

PAINTING | Windows Series



<Confronted Windows-Autumn in ChangDeok Palace>
Oil on Constructed Birch Panel, 60x80x8cm, 2019



<Confronted Solitude-CheWhaJeong>
Oil on Constructed Birch Panel, 60x80x8cm, 2018



**<Between Season - late summer (chaehwajeong)>,
Oil on Constructed Birch Panel, 30X40x6cm, 2019**



**<Solitude-Staying With the Moon-Ver2>,
Oil on Constructed Birch Panel, 30X40x6cm, 2019**



Liang Project Co Space, Shanghai, China (2018, May-June)



<Solitude-Autumn>, Oil on Constructed Birch Panel, 30x40x6cm, 2014



<Solitude-Journey to Nowhere>, Oil on Constructed Birch Panel, 40x30x6cm each, 2017



Utopia as a Distant View, ToSee Gallery, Taipei, Taiwan, 2015



Liang Project Co Space, Shanghai, China (2018, May-June)

PAINTING | Planet Series



<Solar System At The Moment>, Oil on Constructed Birch Panel, 55x55x7cm(each), 2018



<5Solar System At The Moment Earth and Mars>, Oil on Constructed Birch Panel, 55x55x7cm(each), 2017

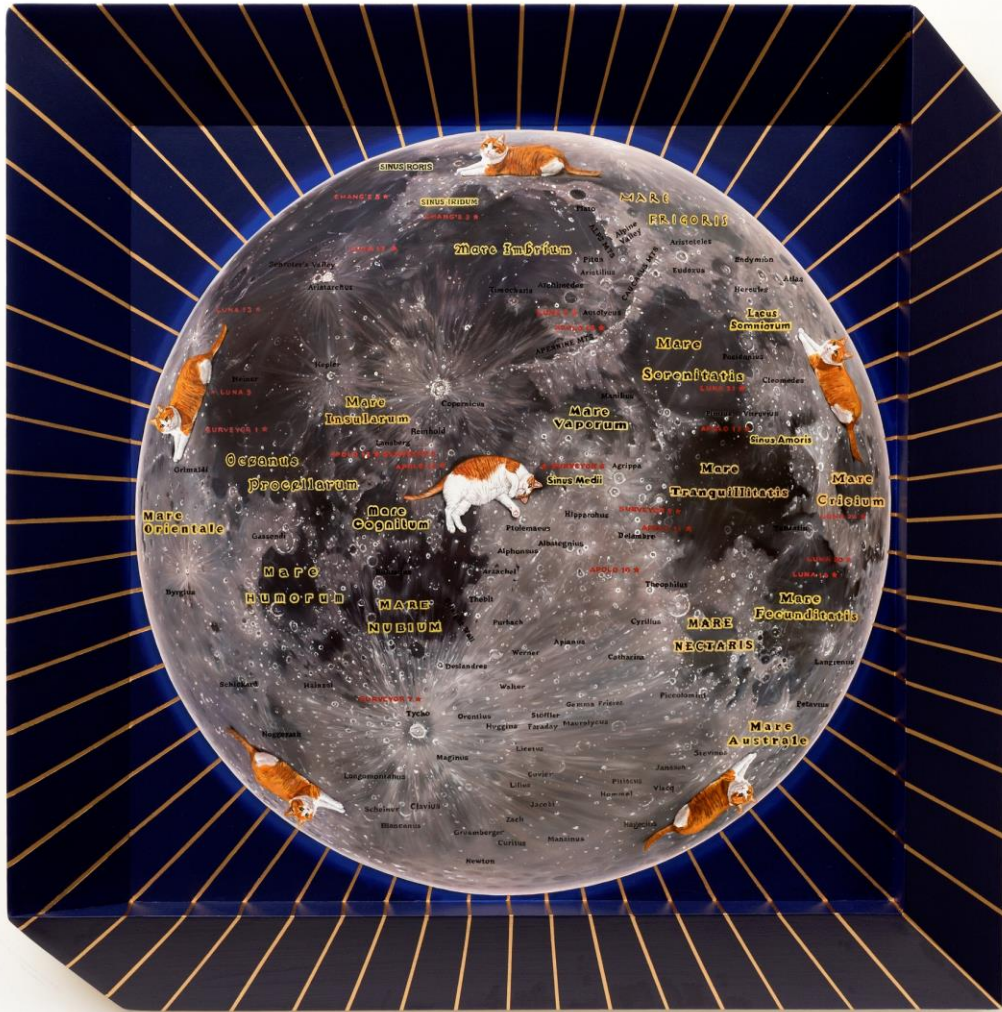




Liang Project Co Space, Shanghai, China (2018, May-June)



ABC (Art, Black Tiger, Cosmos), Korea Astronomy and Space Science Institute & CNCITY Foundation & DaeJeon journal, 2022



Near Side of the Moon – NanaAstro,
105 x 105 x 11cm, Oil on constructed birch panel, 2023



Far Side of the Moon – NanaAstro,
105 x 105 x 11cm, Oil on constructed birch panel, 2023

PAINTING | Box, Curtain, Portrait, etc



<Nana II>, Oil on Canvas, 118x92cm, 2004



<Nana>, Oil on Wood Panel, 54x72cm, 2008



<Ranken>, Oil on Wood Panel, 60x72cm, 2008



Nana in the box - Wernigerode Castle, 72x72x11cm,
oil on constructed birch panel, 2021



<Hidden in Green>
Oil on Canvas, 60x90cm, 2008



<Topological space>, 2008



**<Bama on the Door>,
Oil on Constructed Birch Panel, 78x118cm, 2009**



**<Hidden Menace in the Fold-Fire of Namdaemoon>
Oil on Constructed Birch Panel, 180x220x80cm (4pieces), 2012**



<Personal Collection>
Oil on Wood Relief Panel and Map, 116.5x90cm, 2008



<Personal Collection>
Oil on Wood Relief Panel and Map, 116.5x90cm, 2008



<Two gods and Astronaut I>, Oil on canvas, 153x153cm, 2011



<Two gods and Astronaut II>, Oil on canvas, 153x153cm, 2011



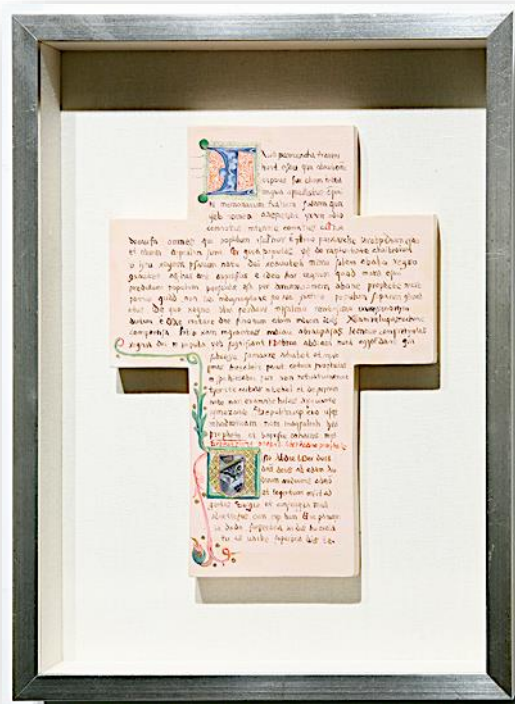
<Topological space>, 2008

<Astronaut and the Conquered Pantheon>
Oil on Canvas, 100×100cm, 2013





<Nana Profile>,
Oil on Woodpanel, 27x31cm, 2008



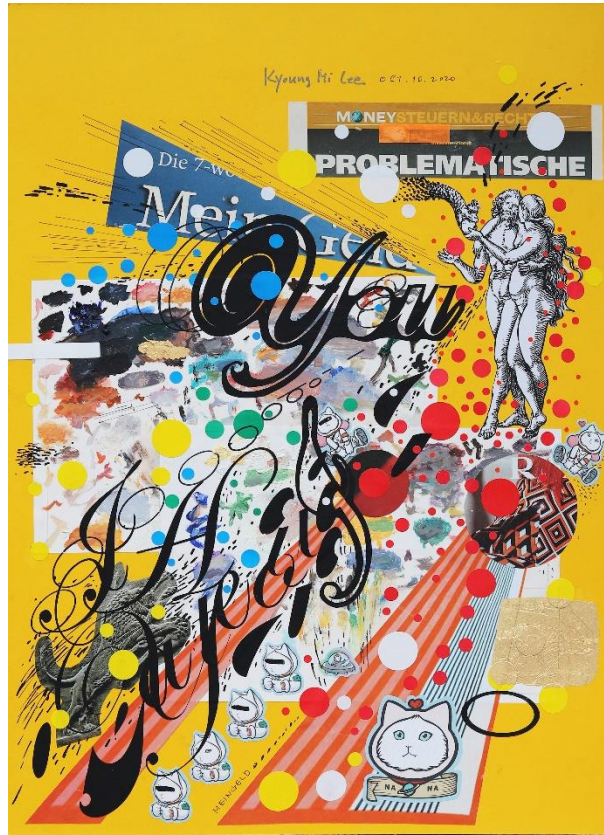
<The Cross>,
Oil on Woodpanel, 44x35cm, 2006



<Formal in the Box>,
Oil on Woodpanel, 28x28cm, 2007



<Nana in the Box>,
2009



Untitled, 54x39cm each, Oil, Ink, Paper collage on Hardboard, 2020

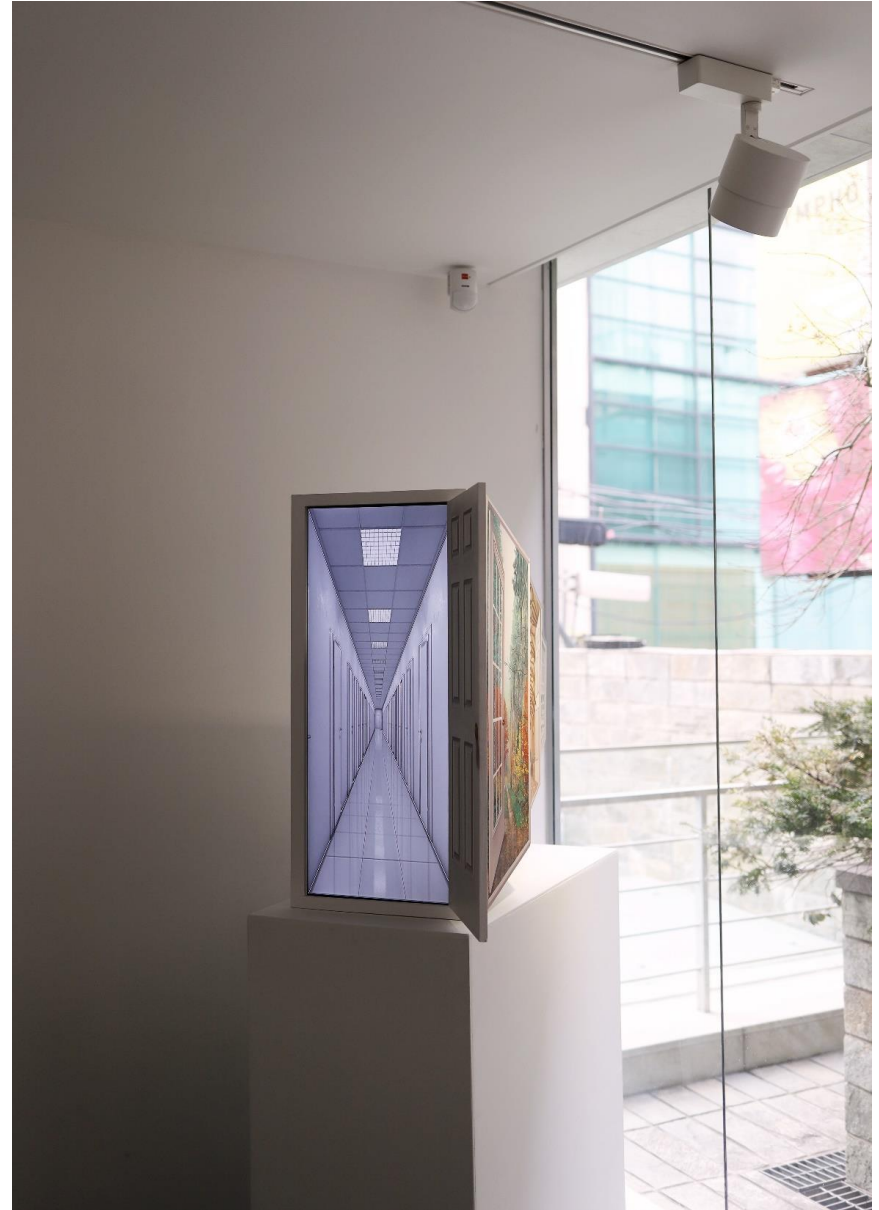
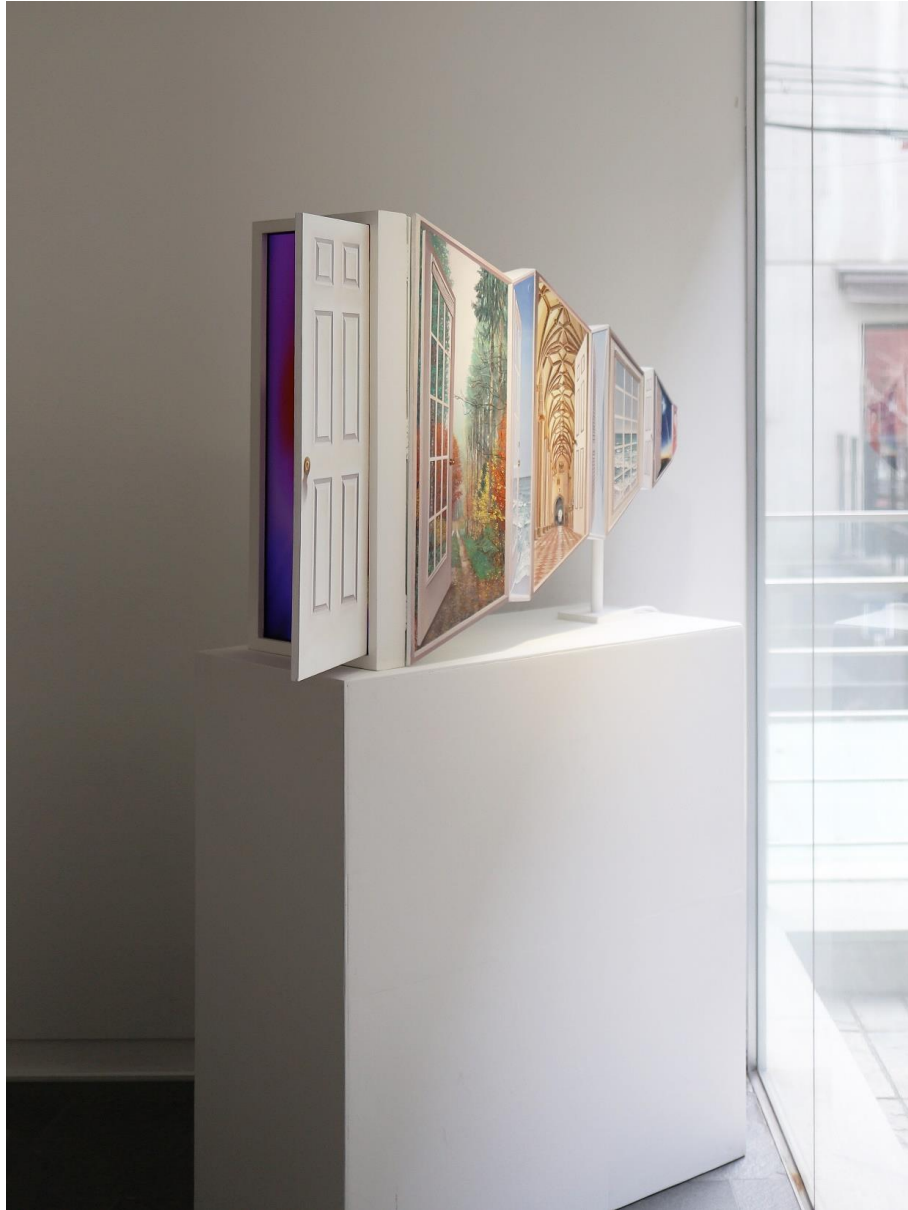
INSTALLATION & Media Art



<Nine Doors>, Wall Length , Oil on Canvas & Wooden Panel, 17m, 2006



<If You Don't Know Where You are Going, Just Go>, 4min Video Clip & Oil on Constructed Birchwood, 220x220x72cm, 2011



Vanishing Point No.3, 72x33x86cm (without base) and Single channel video & Mixed media (Installation), 2022



<Utopia on the Periphery>, Installation view, 2017



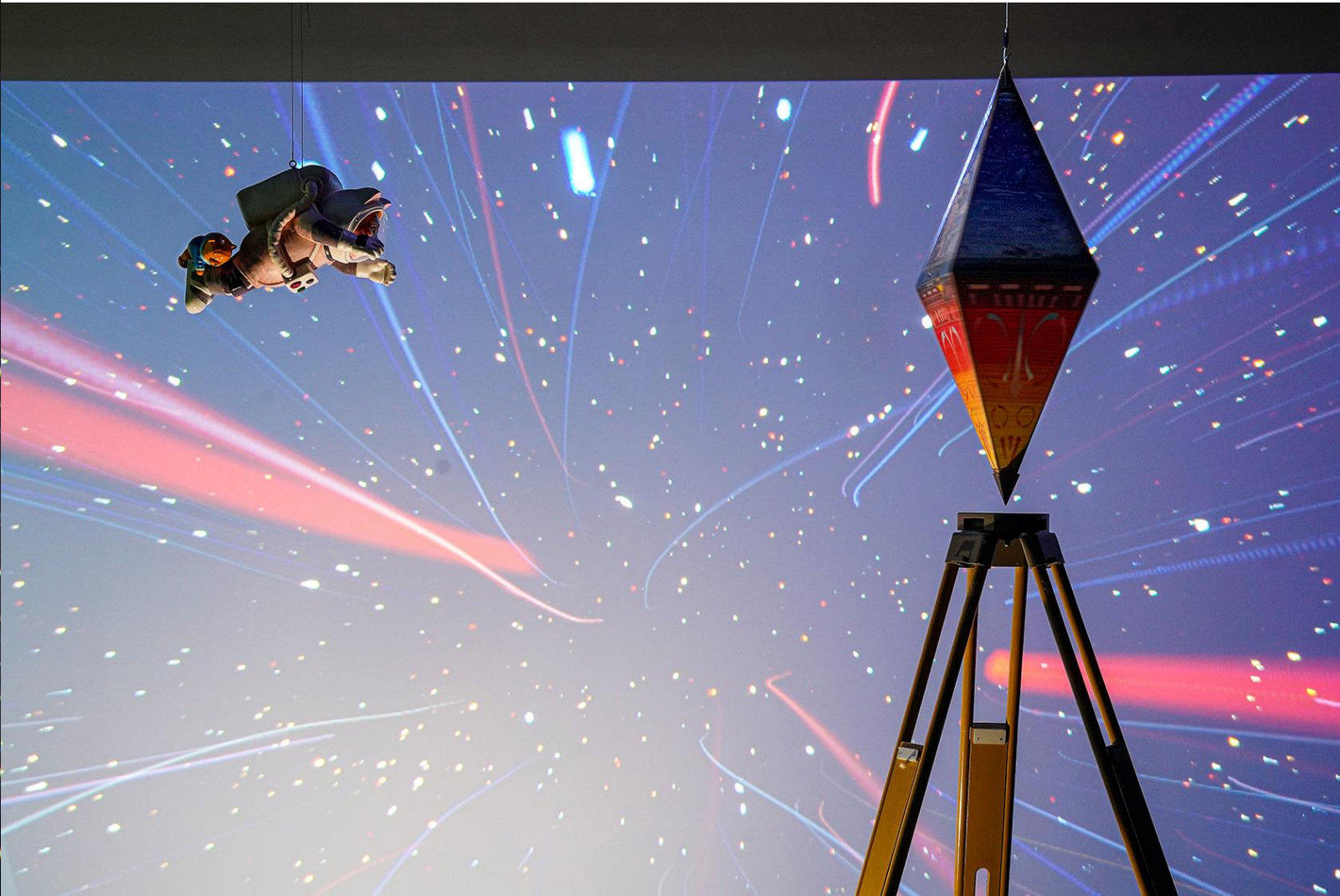
Utopia as a Distant View, ToSee Gallery, Taipei, Taiwan Solo Show, 2015



ClayArk Museum, Gimhae, Korea (2019, Sep--Dec)



Korea Tomorrow (2015)



ABC (Art, Black Tiger, Cosmos), Korea Astronomy and Space Science Institute & CNCITY Foundation & DaeJeon journal, 2022

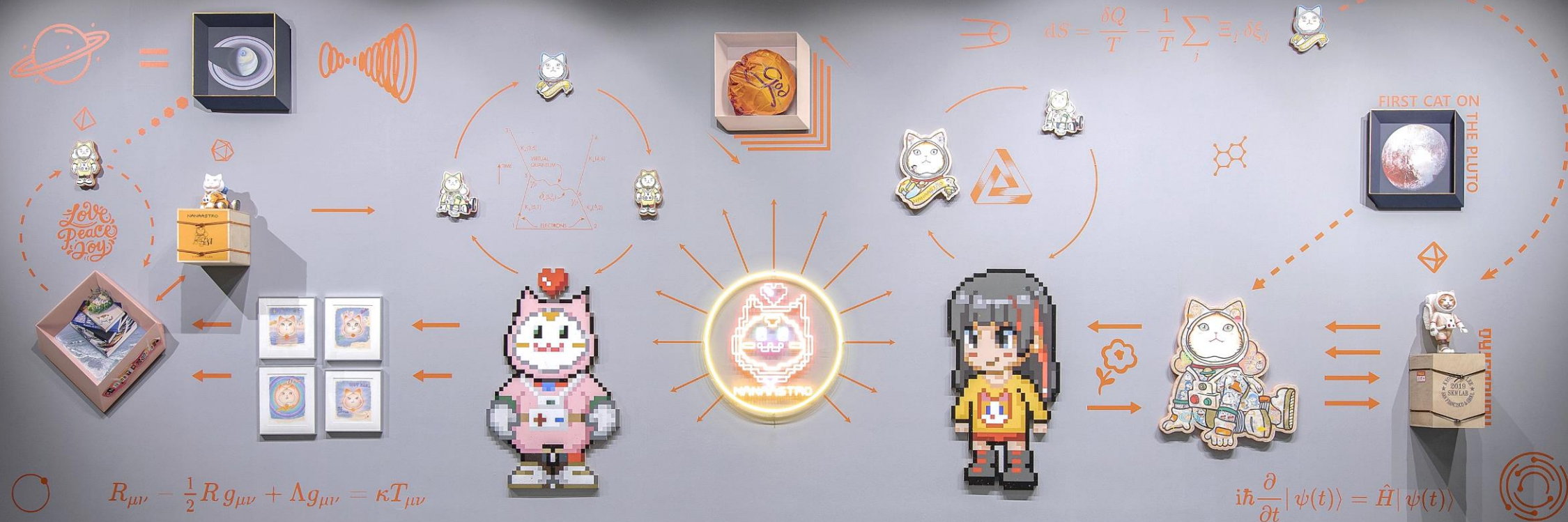


GOYANG Children's museum, installation & 4 channel video and single channel sound, 2022



<Neurath's boat>, Mixed Media & installation. 4ch video and sound (10:00min)

Gloria Ad NanaAstro



POWERLONG MUSEUM, Shanghai, China
Installation of "Atlas of NanaAstro", 2022



POWERLONG MUSEUM, Shanghai, China
Solo Exhibition "Let the Sunshine In", 2022

이경미

李庆美

LEE KYOUNGMI

www.leekyoungmi.com

skmlab@naver.com